



Special Features

- Stainless steel case & measuring system
- Socket & case welded
- Protection IP 65
- Standard followed in general EN 837-1

Application

- Clean air
- Non corrosive gases / liquid media that will not obstruct the pressure system

Specifications

Standard Version : 100 mm & 150 mm

| | |
|--------------------------|----------------------------|
| Accuracy | : ±1.6% of F. S. |
| Ambient temperature | : 0 to 65°C |
| Process temperature | : Max. 200°C |
| Operating pressure range | : 75% of the Scale Value |
| Over pressure limit | : 125% of Max. Scale Value |

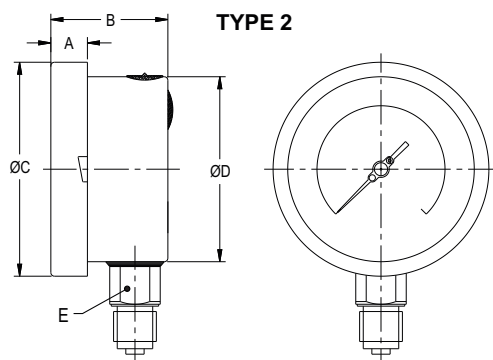
| | |
|-------------|---|
| Case & Ring | : AISI 304 SS (Bayonet Type) |
| Bourdon | : AISI 316L SS |
| Socket | : AISI 304 SS (Directly Welded to Case) |
| Movement | : AISI 304 SS |
| Joints | : Tig Argon Arc Welding |

| | |
|---------------|---|
| Protection | : IP 65 |
| Dial | : Aluminum, black graduation on white background |
| Pointer | : Aluminum, black coloured, slotted zero adjustable |
| Window | : Sheet Glass |
| Blow off Disc | : Neoprene |
| Gasket | : Neoprene |

Temperature effect :

The variation of indication caused by effects of temperature is to be calculated by below formula; which is to be added in the specified accuracy while measurement :- Formula : $\pm 0.04 \times (t_2 - t_1) \% \text{ of F. S.}$ where t_1 = reference temperature (+20°C) and t_2 = ambient temperature in °C.

Dimensions - standard version



| NS | A | B | ØC | ØD | E | Weight in gram (With Box) |
|-----|------|----|-----|-----|----|---------------------------|
| 100 | 12.5 | 47 | 111 | 100 | 22 | 640.0 |
| 150 | 15 | 49 | 161 | 149 | 22 | 1020.0 |

- Notes :
- Drawings are not to scale.
 - All Dimensions are in mm.
 - NS = Nominal Size.

Range Table

Following ranges are available in kg/cm² and psi (Dual Scale) only.

| Pressure | | | | Vacuum & Compound | |
|---|--------------------|--------|--------------------|--|------------------------------|
| Pressure ranges (psi with kg/cm ²) | | | | Compound ranges (inHg with psi & mmHg with kg/cm ²) | |
| psi | kg/cm ² | psi | kg/cm ² | inHg with psi | mmHg with kg/cm ² |
| 0/60 | 0/4 | 0/400 | 0/28 | - 30/0 | - 760/0 |
| 0/100 | 0/7 | 0/500 | 0/35 | - 30/60 | - 760/4 |
| 0/150 | 0/10 | 0/600 | 0/42 | - 30/150 | - 760/10 |
| 0/220 | 0/16 | 0/1000 | 0/70 | -30/200 | -760/14 |
| 0/300 | 0/21 | | | | |

How To Order

| | | | | | |
|-------------------|--|--------|----|-------------------------------|----|
| Basic Model | | | | BV | |
| Code | | | | | |
| Nominal Size | F | H | | X | |
| | 100 mm | 150 mm | | | |
| Type of Mounting | | | | | |
| 2 | Direct bottom entry | | | X | |
| Gauge Connection | | | | | |
| 3BM | 3/8" BSP (M) Standard | | | XXX | |
| 4BM | 1/2" BSP (M) Standard | | | | |
| 4NM | 1/2" NPT (M) Standard | | | | |
| Range | | | | | |
| Refer range table | | | | 0/10 kg/cm ² | |
| Optional extras | | | | | |
| PW | Five point calibration certificate | | SW | Dial tag marking | XX |
| SX | SS tag plate | | TB | Helium leak test | |
| QB | Integral dampening screw (AISI 316 SS) | | GH | Material test certificates*** | |
| SK | Micrometer '0' adjustment pointer | | | | |

*** Material test certificates will be provided for wetted parts only with chemical composition testing.

For others, please consult factory.

Note : Dial scale will be in black color only.

Ordering Example: BV . X . X . XXX . 0/10 kg/cm² . XX

Note : Specifications and dimensions given in this product catalogue represents the state of engineering at the time of printing.

Modifications may take place and materials specified may be replaced by others without prior notice.